

Straight sight glass

Use for discharge liquid or the reflux in front of tank, cooling water and other liquid pipeline, to observe the liquid flow patterns.

Model : HGS07-101

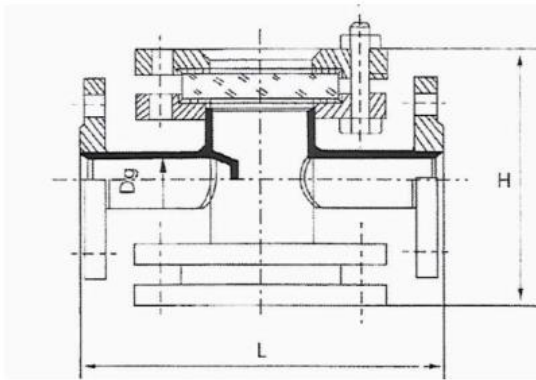
HGS07--102

Body material : carbon steel, stainless steel, rubber, fluorine lined and so on.

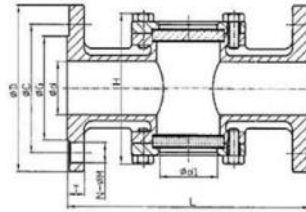
Nominal pressure range : 2.5kgs/cm and 6 kms/cm

Working temperature : metal material below 200 °C, plastic material below 80 °C ,
allowable approve change temperature 80 °C

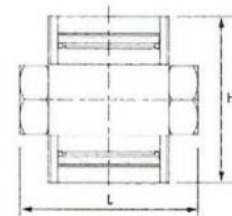
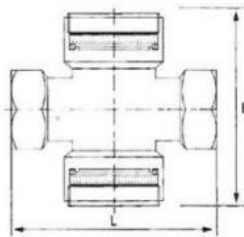
Nominal diameter : 15-150 cm



Nominal diameter	dimension		Glass plate	
	L	H	diameter	thickness
1/2"	200	130	65	10
3/4"	200	130	65	10
1"	200	130	65	10
1-1/4"	260	180	95	15
1-1/2"	260	190	95	15
2"	320	210	140	20
2-1/2"	320	235	140	20
3"	360	250	165	20
4"	360	270	165	20
5"	440	295	165	20
6"	440	335	165	20
8"	480	380		



Size	N-ØM		
DN	10K	150	PN16
15	4-Ø15	4-Ø16	4-Ø14
20	4-Ø15	4-Ø16	4-Ø14
25	4-Ø19	4-Ø16	4-Ø14
32	4-Ø19	4-Ø16	4-Ø18
40	4-Ø19	4-Ø16	4-Ø18
50	4-Ø19	4-Ø19	4-Ø18
65	4-Ø19	4-Ø19	4-Ø18
80	8-Ø19	4-Ø19	8-Ø18
100	8-Ø19	8-Ø19	8-Ø18
125	8-Ø23	8-Ø22	8-Ø22
150	8-Ø23	8-Ø22	8-Ø22



DN	G"	L	H
8	1/4"	90	70
10	3/8"	90	70
15	1/2"	90	70
20	3/4"	100	80
25	1"	110	80
32	1-1/4"	130	95
40	1-1/2"	140	95
50	2"	155	105